

American Eel Distribution and Dam Locations in the Merrymeeting Bay Watershed (Androscoggin and Kennebec River Watersheds)

Androscoggin River Watershed (3,526 sq. miles)

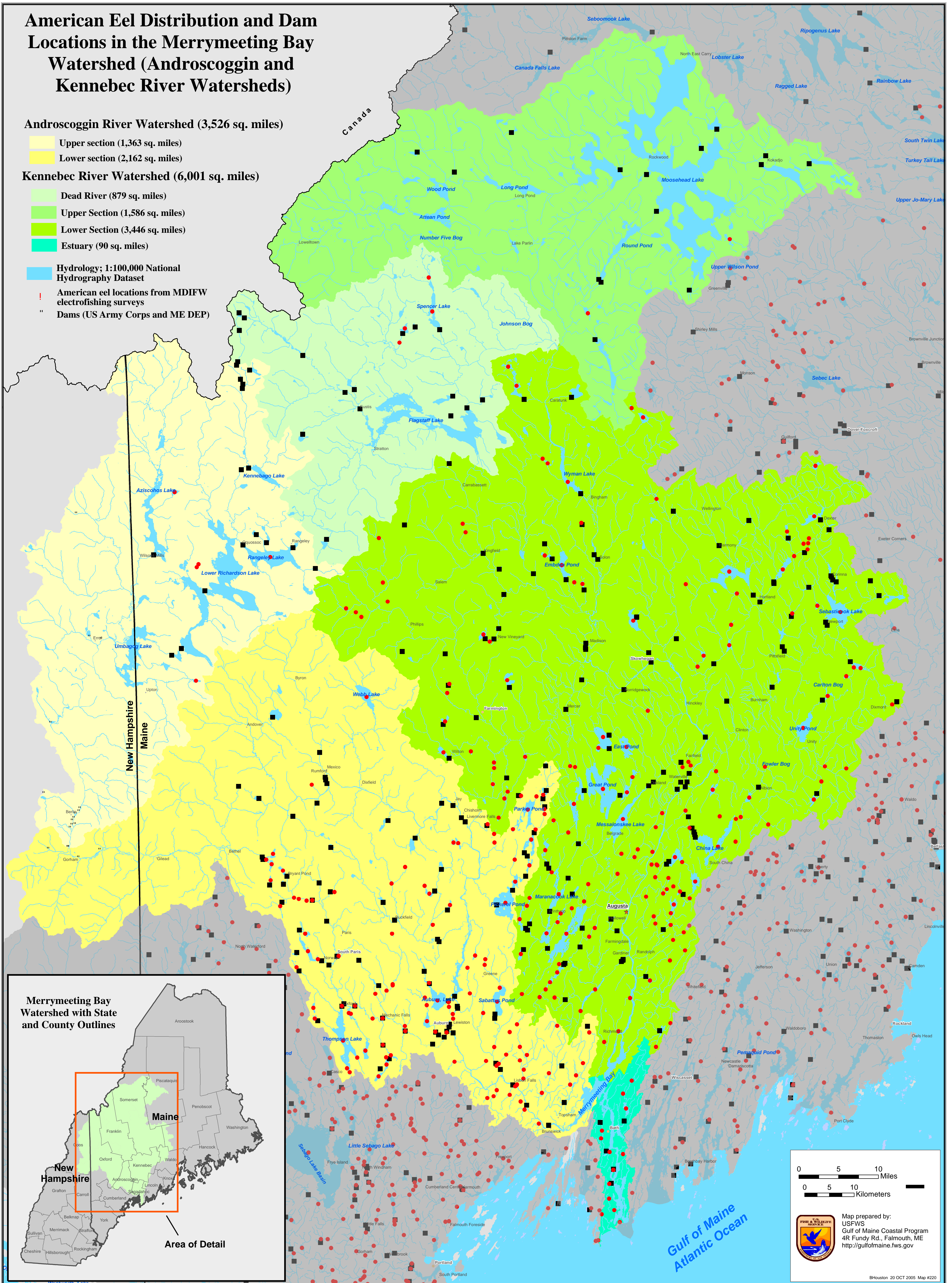
- Upper section (1,363 sq. miles)
- Lower section (2,162 sq. miles)

Kennebec River Watershed (6,001 sq. miles)

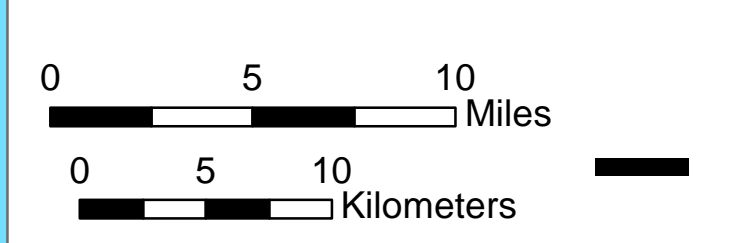
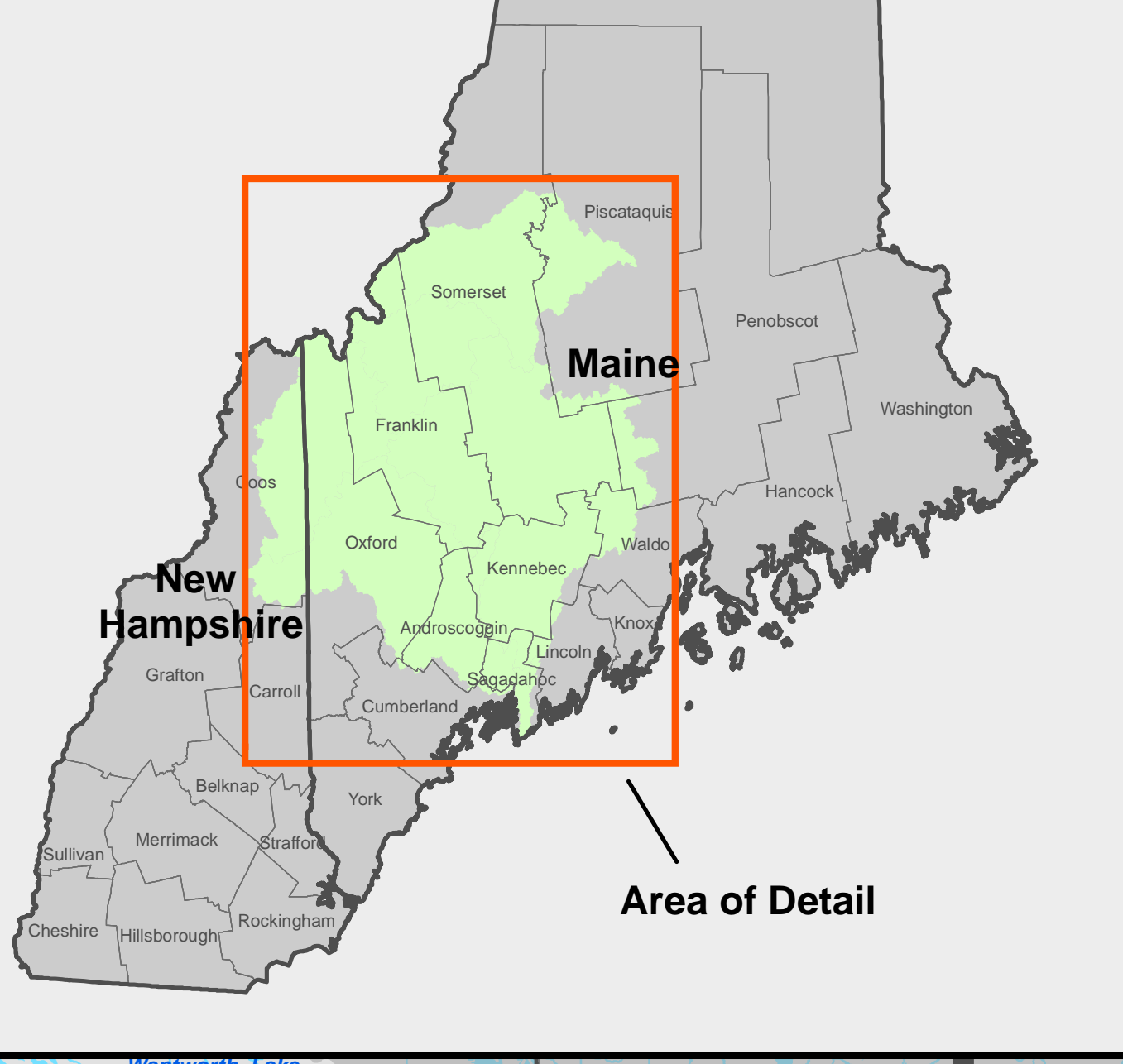
- Dead River (879 sq. miles)
- Upper Section (1,586 sq. miles)
- Lower Section (3,446 sq. miles)
- Estuary (90 sq. miles)

Hydrology; 1:100,000 National Hydrography Dataset

- American eel locations from MDIFW electrofishing surveys
- Dams (US Army Corps and ME DEP)



Merrymeeting Bay Watershed with State and County Outlines



Map prepared by:
 USFWS
 Gulf of Maine Coastal Program
 4R Fundy Rd., Falmouth, ME
<http://gulfofmaine.fws.gov>